

**SRM INSTITUTE OF SCIENCE AND TECHNOLOGY**

**(Faculty of Engineering and Technology)**

**Ramapuram campus**

**NATIONAL SERVICE SCHEME**



SRM Institute of Science & Technology  
Ramapuram Campus  
National Service Scheme

Organizes a Webinar on

# **ROLE OF SPARROWS IN HUMAN LIFE**

 **SATURDAY 20.03.2021 11:30 a.m.**



**Dr. A. Sadhana Rajkumar**

Dietician, Nutritionist & Aerobic Instructor  
French Institute, Pondicherry

Coordinator **Mr. S. D. Kumar**

NSS Program Coordinator, Ramapuram Campus  
Contact: +91 98842 92790

**Zoom Meeting ID: 96359576005 & Passcode: 236352**

  /srmist.rmp

 ist.srmrmp.edu.in

## EVENT REPORT

### WEBINAR ON AWARENESS ON CANCER AND ITS PREVENTION

NATIONAL SERVICE SCHEME-UNIT, SRM Institute of Science and Technology, Ramapuram Campus Conducted a Awareness Program through Webinar on 27<sup>th</sup> February 2021 on “AWARENESS ON CANCER AND ITS PREVENTION” for SRM IST Students , Faculty members and for public as well.

. Objective of this event is to create awareness among the students and faculty members about CANCER and how to get ourselves prevent from it as well as to take precautions.

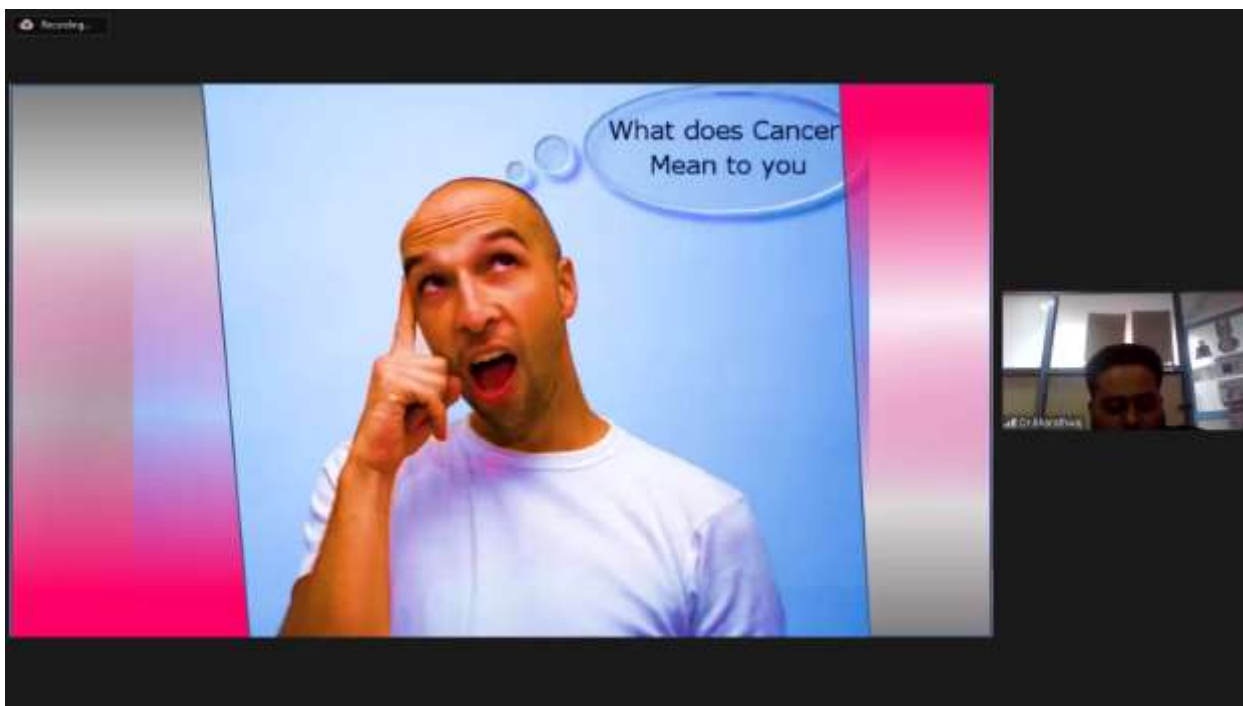
For this Webinar Dr.V.V.BHARATHWAJ ,Assistant Professor,Department of Public Health Dentistry, SRM Dental College and Hospital, Ramapuram Chennai was invited to deliver the lecture on Above mentioned title and its effects on human body and its impact towards death as well as how to get prevented from it. Total number of Faculty Members and students from Our colleges have registered for this webinar is hundred and fifty five and 109 participants have attended through Zoom Meeting.

This Webinar session is started at 10.00am on 27.02.2021 Saturday with welcome address by NSS Program Coordinator, SRM IST Ramapuram campus Mr.S.D.Kumar. Assistant Professor, Department of Mechanical Engineering SRM IST Ramapuram Campus.

Speaker of this webinar session were introduced by Mr.Raghu Assistant Professor, Department Of Computer Science, SRM IST Ramapuram campus then Webinar session handed over to Speaker to do his Presentation.



WELCOME ADDRESS BY Mr.S.D.KUMAR NSS Program Coordinator SRM IST Ramapuram



Dr.V.V.BHARATWAJ PRESENTING THE WEBINAR ON CANCER

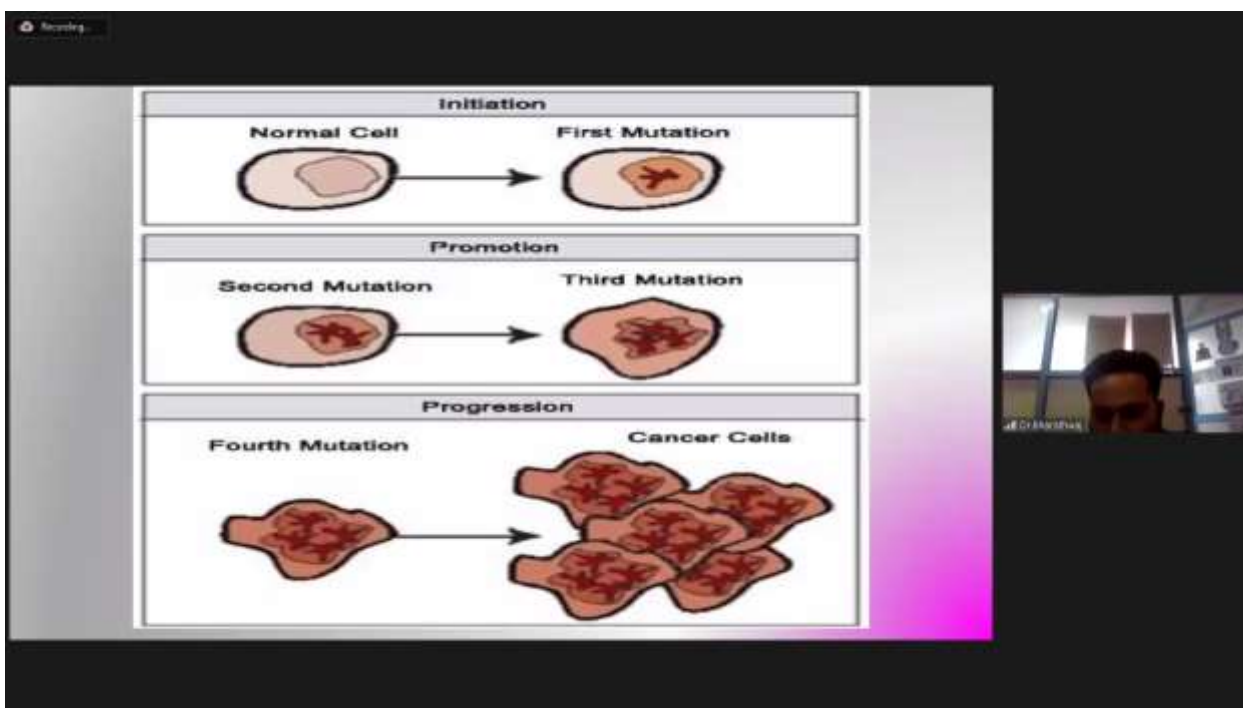


FIGURE DEPICTS CANCER MUTATION

Recording

# Cancer

Main Features

	Malignant Tumor	Benign Tumor
Rate of growth	Rapid	Slow
Nature of growth	Invades surrounding tissue	Expands in the same tissue
Spread	Metastasizes via the bloodstream and the lymphatic system	Does not spread
Cell differentiation	Usually poor	Nearly normal

Dr. Anshu

Recording

# SCENARIO

- ◆ **Cancer causes 20% of all deaths.**
- ◆ **Every Year 8 lakh new cases are detected.**
- ◆ **Every year 5.5 lakh cancer patients die in our country.**

Dr. Anshu

Recording... The content is being recorded. View Options

# FACTS ABOUT CANCER

- ◆ 70 – 80 % cancer are detected at late stage .
- ◆ 50% ignorant at early stage.
- ◆ Early detection helps in complete cure of some cancer.

Participants (21)

Find a participant

Ragu G (Co-host, me)	Mute	Unmute
Kumar Divyanshu (Host)	Mute	Unmute
U R Ragu G (Co-host)	Mute	Unmute
Ash Rishi (Co-host)	Mute	Unmute
Aravindhan K (Co-host)	Mute	Unmute
Dr Dharmaraj (Co-host)	Mute	Unmute
VCO IT RMI (Co-host)	Mute	Unmute
ET Sangh	Mute	Unmute
U SARATHIBALLA	Mute	Unmute
Jha Virendra Reddy	Mute	Unmute
Ajay K.	Mute	Unmute
Ashya Sharma	Mute	Unmute
Dr. K. Rama	Mute	Unmute
iphone 11	Mute	Unmute
iPhone	Mute	Unmute
Manan, M	Mute	Unmute
Hiriyasibga C	Mute	Unmute
Rinoo Kumar	Mute	Unmute

Send Mute All

Screen Share | Stop Video | Security | Participants | Chat | Share Screen | Raise Hand | Power On/Off Recording

Leave

Recording...

## 5 year survival data in cancer cervix

- 80 to 90% of women with stage I cancer
- 50 to 65% of those with stage II cancer.
- 25 to 35% of women with stage III cancer
- 15% or fewer of those with stage IV cancer

Participants (21)

Find a participant

Rinoo Kumar	Mute	Unmute
SA191187020025	Mute	Unmute
Ecoban	Mute	Unmute
Indroban Kumar Singh	Mute	Unmute
Shah Mubassir Hussain	Mute	Unmute
Shah Kumar	Mute	Unmute
Srinivasan R Rishi	Mute	Unmute
Uthayapathy C (IC013002013001)	Mute	Unmute
Victor CGE	Mute	Unmute
901-342344AR S	Mute	Unmute
VIT-High	Mute	Unmute
JC RMP-142	Mute	Unmute
JC RMP-142	Mute	Unmute
Ashwani D	Mute	Unmute
Ashya Ranghi	Mute	Unmute
Ashya Raj	Mute	Unmute
ANIKET_D0V_S14_01776	Mute	Unmute
Aradhya ED	Mute	Unmute

Send Mute All

Screen Share | Stop Video | Security | Participants | Chat | Share Screen | Raise Hand | Power On/Off Recording

**5 year survival data in cancer cervix**

- 80 to 90% of women with stage I cancer
- 50 to 65% of those with stage II cancer.
- 25 to 35% of women with stage III cancer
- 15% or fewer of those with stage IV cancer

Participants (34)

Participant	Status	
A	ajaykumar_boy_544_01776	Muted
AD	kaarthi_8D	Muted
AM	subash_9eece	Muted
AM	Arora MAMMA_023	Muted
CE	CHANDRAN S (9A181100020000)	Muted
DV	DEEPAK UNDYALATHAL	Muted
D	Deepika D	Muted
D	Dhanush	Muted
FS	SHREYAS SETHURAMAN M	Muted
GR	Gouram R (A112)	Muted
HS	Hemanta Sahoo	Muted
J	Jayanthi's	Muted
JP	Hemanta Panthi	Muted
JP	J VenkateshChandru	Muted
KM	K. MURAJESWARAN	Muted
KN	C.Sri Prityananda Reddy	Muted
S	Satya	Muted
SA	Kishore Anbu	Muted

**5 year survival data in cancer breast**

- 0—93%
- I—88%
- IIA—81%
- IIB—74%
- IIIA—67%
- IIIE—41%\*
- IIIC—49%\*
- IV—15%

Participants (33)

Participant	Status	
KA	Kishore Anbu	Muted
K	Kishor	Muted
KB	Kishore g (9A181100020107)	Muted
KN	Kannan Pahal	Muted
L	Lokesh	Muted
MB	Mohan Raj	Muted
NI	Nikhil 156	Muted
P	Prathu	Muted
R	Raj1811000202146	Muted
R	Raj1811000202047	Muted
RP	RAJANAND RAYDIP	Muted
RR	Raj Raj	Muted
RA	ROHITH AKDUMMI	Muted
SM	S. Muralidhar	Muted
S	Sampathkumar	Muted
S	Saranya	Muted
S	SANTHIL	Muted
S	Shree Sakthya	Muted

FIGURE DEPICTS ORAL CANCER



FIGURE DEPICTS BREAST CANCER

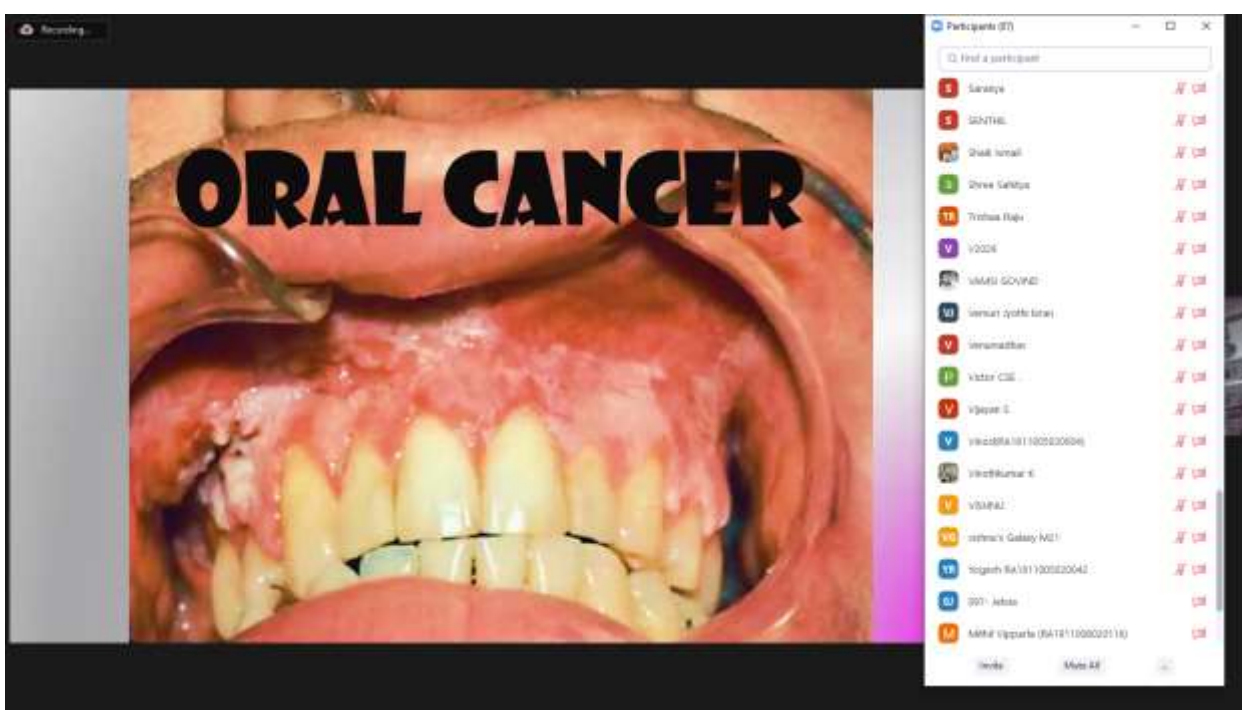




FIGURE DEPICTS ORAL CANCER

Recording...



**Genetics  
loads  
the gun  
and  
environment  
pulls the trigger.**

-Dr. Francis Collins



Recording...

# BETELNUT



BETAL NUT CAUSES CANCER ON TOOTH





FIGURE DEPICTS 7 TYPES OF CANCER DUE TO ALCOHOL



FIGURE DEPICTS COMPROMISED PHYSICAL ACTIVITY OF CANCER

Recording...

- Retinoblastoma
- Colon
- Breast
- Ovary

## HERIDITARY

Category	Percentage
Sporadic	70-80%
Family Clusters	15-20%
Hereditary	5-10%

Legend:  
 ■ Sporadic  
 ■ Family Clusters  
 ■ Hereditary

Dr. Anshuman

FIGURE DEPICTS HERIDITARY OF CANCER

Recording...

## FOOD ADDITIVES?

The image shows a hand holding a blue card with a list of food additives. To the right is a cupcake with a large, colorful sprinkle top.

Ingredients listed on the card:  
 E101, E102, E104, E129, E130, E131, E132, E133, E139, E140, E141, E142, E143, E150, E151, E152, E153, E154, E155, E156, E157, E158, E159, E160, E161, E162, E163, E164, E165, E166, E167, E168, E169, E170, E171, E172, E173, E174, E175, E176, E177, E178, E179, E180, E181, E182, E183, E184, E185, E186, E187, E188, E189, E190, E191, E192, E193, E194, E195, E196, E197, E198, E199, E200, E201, E202, E203, E204, E205, E206, E207, E208, E209, E210, E211, E212, E213, E214, E215, E216, E217, E218, E219, E220, E221, E222, E223, E224, E225, E226, E227, E228, E229, E230, E231, E232, E233, E234, E235, E236, E237, E238, E239, E240, E241, E242, E243, E244, E245, E246, E247, E248, E249, E250, E251, E252, E253, E254, E255, E256, E257, E258, E259, E260, E261, E262, E263, E264, E265, E266, E267, E268, E269, E270, E271, E272, E273, E274, E275, E276, E277, E278, E279, E280, E281, E282, E283, E284, E285, E286, E287, E288, E289, E290, E291, E292, E293, E294, E295, E296, E297, E298, E299, E300, E301, E302, E303, E304, E305, E306, E307, E308, E309, E310, E311, E312, E313, E314, E315, E316, E317, E318, E319, E320, E321, E322, E323, E324, E325, E326, E327, E328, E329, E330, E331, E332, E333, E334, E335, E336, E337, E338, E339, E340, E341, E342, E343, E344, E345, E346, E347, E348, E349, E350, E351, E352, E353, E354, E355, E356, E357, E358, E359, E360, E361, E362, E363, E364, E365, E366, E367, E368, E369, E370, E371, E372, E373, E374, E375, E376, E377, E378, E379, E380, E381, E382, E383, E384, E385, E386, E387, E388, E389, E390, E391, E392, E393, E394, E395, E396, E397, E398, E399, E400, E401, E402, E403, E404, E405, E406, E407, E408, E409, E410, E411, E412, E413, E414, E415, E416, E417, E418, E419, E420, E421, E422, E423, E424, E425, E426, E427, E428, E429, E430, E431, E432, E433, E434, E435, E436, E437, E438, E439, E440, E441, E442, E443, E444, E445, E446, E447, E448, E449, E450, E451, E452, E453, E454, E455, E456, E457, E458, E459, E460, E461, E462, E463, E464, E465, E466, E467, E468, E469, E470, E471, E472, E473, E474, E475, E476, E477, E478, E479, E480, E481, E482, E483, E484, E485, E486, E487, E488, E489, E490, E491, E492, E493, E494, E495, E496, E497, E498, E499, E500, E501, E502, E503, E504, E505, E506, E507, E508, E509, E510, E511, E512, E513, E514, E515, E516, E517, E518, E519, E520, E521, E522, E523, E524, E525, E526, E527, E528, E529, E530, E531, E532, E533, E534, E535, E536, E537, E538, E539, E540, E541, E542, E543, E544, E545, E546, E547, E548, E549, E550, E551, E552, E553, E554, E555, E556, E557, E558, E559, E560, E561, E562, E563, E564, E565, E566, E567, E568, E569, E570, E571, E572, E573, E574, E575, E576, E577, E578, E579, E580, E581, E582, E583, E584, E585, E586, E587, E588, E589, E590, E591, E592, E593, E594, E595, E596, E597, E598, E599, E600, E601, E602, E603, E604, E605, E606, E607, E608, E609, E610, E611, E612, E613, E614, E615, E616, E617, E618, E619, E620, E621, E622, E623, E624, E625, E626, E627, E628, E629, E630, E631, E632, E633, E634, E635, E636, E637, E638, E639, E640, E641, E642, E643, E644, E645, E646, E647, E648, E649, E650, E651, E652, E653, E654, E655, E656, E657, E658, E659, E660, E661, E662, E663, E664, E665, E666, E667, E668, E669, E670, E671, E672, E673, E674, E675, E676, E677, E678, E679, E680, E681, E682, E683, E684, E685, E686, E687, E688, E689, E690, E691, E692, E693, E694, E695, E696, E697, E698, E699, E700, E701, E702, E703, E704, E705, E706, E707, E708, E709, E710, E711, E712, E713, E714, E715, E716, E717, E718, E719, E720, E721, E722, E723, E724, E725, E726, E727, E728, E729, E730, E731, E732, E733, E734, E735, E736, E737, E738, E739, E740, E741, E742, E743, E744, E745, E746, E747, E748, E749, E750, E751, E752, E753, E754, E755, E756, E757, E758, E759, E760, E761, E762, E763, E764, E765, E766, E767, E768, E769, E770, E771, E772, E773, E774, E775, E776, E777, E778, E779, E780, E781, E782, E783, E784, E785, E786, E787, E788, E789, E790, E791, E792, E793, E794, E795, E796, E797, E798, E799, E800, E801, E802, E803, E804, E805, E806, E807, E808, E809, E810, E811, E812, E813, E814, E815, E816, E817, E818, E819, E820, E821, E822, E823, E824, E825, E826, E827, E828, E829, E830, E831, E832, E833, E834, E835, E836, E837, E838, E839, E840, E841, E842, E843, E844, E845, E846, E847, E848, E849, E850, E851, E852, E853, E854, E855, E856, E857, E858, E859, E860, E861, E862, E863, E864, E865, E866, E867, E868, E869, E870, E871, E872, E873, E874, E875, E876, E877, E878, E879, E880, E881, E882, E883, E884, E885, E886, E887, E888, E889, E890, E891, E892, E893, E894, E895, E896, E897, E898, E899, E900, E901, E902, E903, E904, E905, E906, E907, E908, E909, E910, E911, E912, E913, E914, E915, E916, E917, E918, E919, E920, E921, E922, E923, E924, E925, E926, E927, E928, E929, E930, E931, E932, E933, E934, E935, E936, E937, E938, E939, E940, E941, E942, E943, E944, E945, E946, E947, E948, E949, E950, E951, E952, E953, E954, E955, E956, E957, E958, E959, E960, E961, E962, E963, E964, E965, E966, E967, E968, E969, E970, E971, E972, E973, E974, E975, E976, E977, E978, E979, E980, E981, E982, E983, E984, E985, E986, E987, E988, E989, E990, E991, E992, E993, E994, E995, E996, E997, E998, E999, E1000.

Dr. Anshuman

FIGURE DEPICTS FOOD ADDITIVES CAUSE ORAL CANCER



FIGURE DEPICTS PREVENTION OF CANCER BY TAKING FIBER CONTAINED FOOD



FIGURE DEPICTS PREVENTION OF CANCER BY TAKING GREEN TEA



FIGURE DEPICTS PREVENTION OF CANCER BY BY TAKING MORE WATER



BY TAKING EARLY PRECAUTION TO AVOID SPREDING OF CANCER

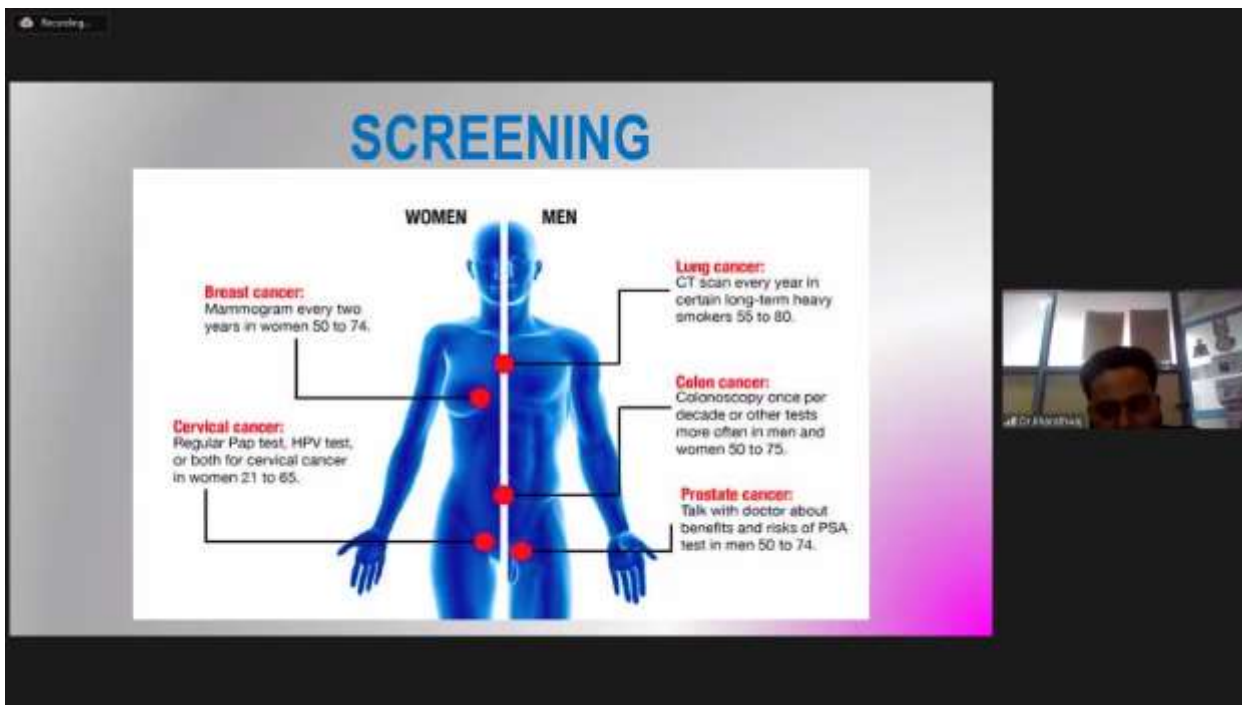


FIGURE DEPICTS SCREENING OF CANCER IN HUMAN FOR BOTH SEX



FIGURE DEPICTS SCREENING OF CANCER IN DENTAL

Questionnaire session was given to all the Participants at the end of session all participants were asked to submit the feedback through the link posted in chat box and their feedback was that this webinar was so Interactive and Enthusiastic.

All the Participants of the Event Thanked Dr.V.V.BHARATHWAJ for his Wonderful presentation on Cancer and its Prevention.

Finally, Webinar session ended with Vote of Thanks by Mr.Arulvendhan, Assistant Professor, Department of Electrical and Electronics Engineering, SRM IST Ramapuram Chennai..